

Universal uni-/bipolar signal transmitter

4184



- Measures DC inputs up to ± 300 V / ± 100 mA with spans as low as 25 mV / 0.5 mA
- Passive/active current output and buffered voltage output
- Fast < 20 ms response time and excellent 0.05% accuracy
- Universally powered by 21.6...253 VAC / 19.2...300 VDC



Application

- Fast < 20 ms response time for measuring signals produced by torque, position, current & acceleration sensors.
- User configurable bipolar or unipolar I/O means the 4184 is suitable for nearly any DC voltage or current conversion.
- Freely programmable between ± 300 VDC and ± 100 mA.
- The excitation source allows measurement of a 2-wire or 3-wire transmitter, or a potentiometer.
- Converts narrow bipolar inputs to wide bipolar or unipolar outputs, e.g., ± 1 volt input = ± 10 volt or 4...20 mA output.
- Configurable input limits control the output value for increased safety.
- ± 20 VDC buffered voltage output for controlling devices like the PVG 32 valve (6...18 VDC).
- Designed according to strict safety requirements and is therefore suitable for application in SIL 2 installations.
- Suitable for the use in systems up to Performance Level "d" according to ISO-13849.

Technical characteristics

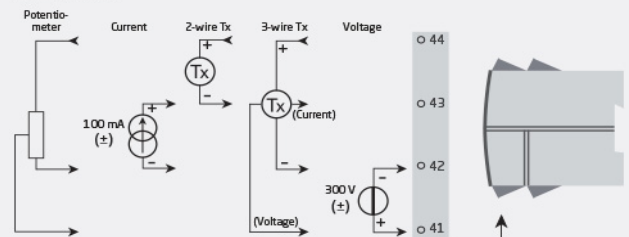
- The latest analog and digital techniques are used to obtain maximum accuracy and immunity to interference.
- Possibility of output safety readback by selecting S4...20 mA output.
- The current output can drive up to 1000 Ohms, with an adjustable response time of 0.0...60.0 seconds.
- Exceptional mA output load stability of < 0.001% of span / 100 Ohm.
- Meets the NAMUR NE21 recommendations, ensuring high accuracy in harsh EMC environments.
- Meets the NAMUR NE43 recommendations, allowing the control system to easily detect a sensor error.
- Tested to a high 2.3 kVAC, 3-port galvanic isolation level.
- Excellent signal to noise ratio of > 60 dB.

Mounting / installation / programming

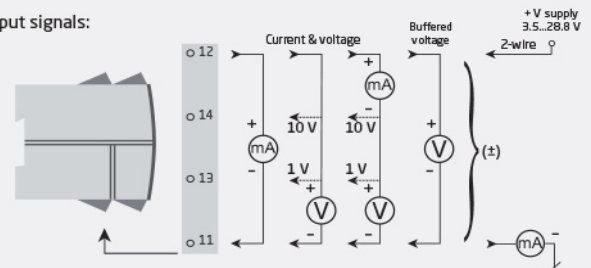
- Very low power consumption means units can be mounted side by side without an air gap – even at 60°C ambient temperature.
- Configuration, monitoring, 2-point process calibration and more are accomplished using PR's 4500 series of detachable displays.

Applications

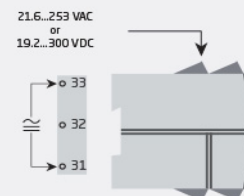
Input signals:



Output signals:



Power connection:



- All programming can be password-protected.

Order:

Type
4184

This page is automatically generated on the basis of information provided on www.prelectronics.com and its affiliated websites. It is provided to you as a service and for information purpose only. While we have attempted to maintain the information as accurately as possible, the page may contain errors or omissions and we do not warrant, represent or guarantee the accuracy, reliability or completeness of the information. We disclaim any and all liability.

Environmental Conditions

Operating temperature.....	-20°C to +60°C
Storage temperature.....	-20°C to +85°C
Calibration temperature.....	20...28°C
Relative humidity.....	< 95% RH (non-cond.)
Protection degree.....	IP20

Mechanical specifications

Dimensions (HxWxD).....	109 x 23.5 x 104 mm
Dimensions (HxWxD) w/ 4501/451x.....	109 x 23.5 x 116 / 131 mm
Weight approx.....	155 g
Weight incl. 4501 / 451x (approx.).....	170 g / 185 g
DIN rail type.....	DIN EN 60715/35 mm
Wire size.....	0.13...2.08 mm ² AWG 26...14 stranded wire
Screw terminal torque.....	0.5 Nm

Common specifications**Supply**

Supply voltage, universal.....	21.6...253 VAC, 50...60 Hz or 19.2...300 VDC
Max. required power.....	≤ 2.5 W
Internal power dissipation.....	≤ 2.0 W

Isolation voltage

Test voltage.....	2.3 kVAC
Working voltage.....	250 VAC (reinforced) / 500 VAC (basic)

Response time

Response time (0...90%, 100...10%).....	< 20 ms
---	---------

Auxiliary supplies

2-wire loop supply.....	> 16 V @ 23 mA
3-wire loop supply.....	> 18...< 28 V @ 23...0 mA
Loop supply limitation.....	27...35 mA avg., < 80 mA peak

Reference voltage.....	2.5 VDC ±0.5%
Reference voltage, load.....	0...15 mA
Current limit, reference voltage.....	< 60 mA

Programming.....	PR 4500 communication interfaces
------------------	----------------------------------

Signal dynamics, input.....	24 bit
Signal dynamics, output.....	18 bit
Signal / noise ratio.....	> 60 dB
Bandwidth.....	> 40 Hz
Accuracy.....	Better than 0.05% of selected range

EMC immunity influence.....	< ±0.5% of span
Extended EMC immunity: NAMUR NE21, A criterion, burst.....	< ±1% of span
Conducted emission, cl. A.....	150 kHz...10 MHz

Input specifications**Current input**

Signal range.....	±100 mA
Programmable measurement ranges.....	0...1, 0...5, 1...5, 0...20, 4...20, ±1, ±5, ±10, ±20, ±50, ±100 mA
Custom configurable signal range.....	±100 mA
Min. measurement range (span).....	0.5 mA

Input voltage drop.....	0.6 V @ 20 mA nom.
-------------------------	--------------------

Voltage input

Signal range.....	±300 VDC
Programmable measurement ranges.....	0...0.1, 0...1, 0.2...1, 0...2.5, 0...5, 1...5, 0...10, 2...10, 0...100, 0...300, ±0.1, ±1, ±2.5, ±5, ±10, ±100, ±300 V
Custom configurable signal range.....	±300 V
Min. measurement range (span).....	25 mV
Input resistance.....	Nom. 3 MΩ (> 2.5 VDC)
Input resistance.....	Nom. > 10 MΩ (≤ 2.5 VDC)

Potentiometer input

3-wire potentiometer input.....	0...100%
Reference voltage.....	2.5 V
Calibration resistance.....	5 kΩ
Min. potentiometer resistance.....	200 Ω

Output specifications**Current output**

Signal range.....	0...23 mA (unipolar)
Signal range.....	-23...+23 mA (bipolar)
Custom config. output range.....	±20 mA
Min. signal range.....	4 mA
Load (@ current output).....	≤ 1000 Ω / ± 20 V @ ±20 mA
Current limit.....	≤ 28 mA (unipolar)
Current limit.....	± 28 mA (bipolar)
Load stability.....	≤ 0.001% of span / 100 Ω
Response time, programmable.....	0.0...60.0 s

Passive 2-wire mA output

Programmable ranges.....	0...20 and 4...20 mA
Ext. 2-wire loop supply range.....	3.5...28.8 VDC

Voltage output

Programmable signal ranges.....	0/0.2...1; 0/1...5; 0/2...10 V
Programmable signal ranges.....	±1, ±5 and ±10 V
Programmable signal ranges.....	Direct or Inverted action
Load (@ voltage output).....	≥ 500 kΩ
Response time, programmable.....	0.0...60.0 s

Shunted voltage output

Signal range.....	± 1.2 V / ± 12 V
Programmable standard ranges.....	0...1, 0...2.5, 0...5, 1...5, 0...10, 2...10 V ±1, ±2.5, ±5, ±10 V
Min. span.....	0.8 V
Custom config. output range.....	±10 V
Load, min.....	> 500 kΩ

Buffered voltage output

Signal range.....	± 23 V
Programmable standard ranges.....	0...1, 0.2...1, 0...2.5, 0...5, 1...5, 0...10, 2...10, 0...20, 4...20; ±1, ±2.5, ±5, ±10, ±20 V
Min. span.....	0.8 V
Custom config. output range.....	±20 V
Current limit.....	< 50 mA
Load, min.....	> 2 kΩ

Observed authority requirements

EMC.....	2014/30/EU & UK SI 2016/1091
LVD.....	2014/35/EU & UK SI 2016/1101

RoHS..... 2011/65/EU & UK SI
2012/3032
EAC..... TR-CU 020/2011

Approvals

c UL us, UL 508..... E248256
SIL..... Hardware assessed for use in
SIL applications